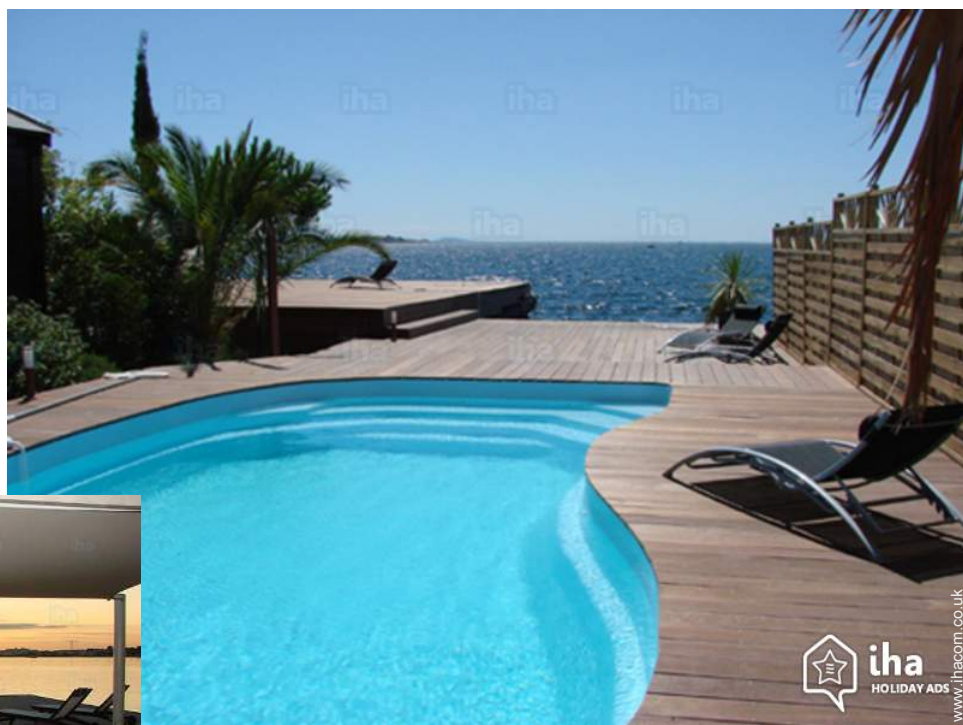


# Charming holiday letting Mediterranean Sea Charming Wooden House

Wooden house near the water, with terrace, pool and pontoon. Exceptional views of Sète and Bassin de Thau. Charm, comfort and authenticity.



**Charming Wooden House**, detached, 1 floor, separate entrance, in a(an) Private property

Setting : waterfront, enchanting

Capacity : **from 2 to 10 person(s)**

Bedroom(s) : 4

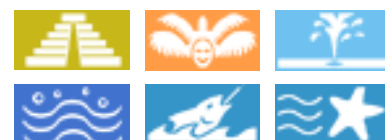
Room(s) : 6

**Balaruc-les-Bains - Hérault (34) - Languedoc-Roussillon  
France**

Reservation : +33 (0) 6 15 10 06 29 (France)

Advert No. 17592

[www.ihacom.co.uk](http://www.ihacom.co.uk)



## Charming holiday letting



Charming Wooden House, detached, 1 floor, separate entrance, in a(an) Private property

- **Ideal for all age groups, family**
- **View :** panoramic, not overlooked, sea/ocean, swimming pool, lake, fantastic sunset
- **Setting :** waterfront, enchanting
- **Exposure :** South-west

" Private pontoon 150 m<sup>2</sup> and terrace secure 35 m<sup>2</sup> private unopposed, possibility of boat anchor. Deck 140 m<sup>2</sup> exotic wood with pool (8 m x 4 m) common to independent F2. Love for sunsets. Lot 1000 m<sup>2</sup> wooded, Portal digicode-secure parking. House 150 sq.m, comfortable, 3 rooms + dorm. Ground floor: living room 65 m<sup>2</sup> views sea (fireplace, TV screen flat 1 m, Hi-fi, free Wifi), equipped kitchen, double room (bed), wc, bathroom with shower. First floor: 2 double bedrooms (double beds), dormitory (3 single beds), library, bathroom bath, wc. "

## Assets

- **Swimming pool :**  
Private swimming-pool, oval (length 26', width 13'), illuminated, steps in, child secure, outside shower
- **Parking :**  
Parking uncovered : 4 off road.
- **Advantages :**  
Piano
- **baby equipment :**  
Baby chair, baby bath, baby potty

## Surroundings & location



" A unique place between SETE authentic and MONTPELLIER dynamics. Between the wild Camargue, the Cathar castles, and national parks. Balaruc les Bains second Spa of France enjoys an exceptional situation facing Sète and the Mont Saint Clair. Inhabited by man since antiquity for its hot Balaruc, small town in the South where it is good live the feet in water... with Bouzigues its parks to oysters and Montpellier in 15 minutes via the motorway, offers you a choice of activities, excursions, tours, festivals, as vast as the color palette of the sunsets over the basin! The Bassin de Thau, vast inland sea contacting the Mediterranean by Sète and Marseillan, and junction between canal du Midi and canal from the Rhône to Sète "

### Leisure

- **Leisure activities less than 20 km / 12 miles :**

Bathing, pedalo, snorkelling, scuba diving, banana boat, water skiing, jet ski, surfing, windsurfing, sailing, kite surfing, canoeing, golf, tennis, mountain bike (path), parascending, Microlights, boat trips, horse trekking, mini-golf, rollerblade/rollerskate (circuit), skate board (ramps), volleyball, clay pigeon shooting, acrobatics, fishing, deep-sea angling, angling, spear fishing, pétanque pitch

- **Supervised :**

Sailing school, dive school, tennis school, riding school

- **Attractions and relaxation :**

Bar/pub, discotheque, restaurant, cinema, open air summer cinema, karaoke, park and garden, leisure park, zoo/animal park, sea world, nature reserve, exhibition centre, art gallery, historical site, museum, theatre, summer theatre, festivals, antiques & bric-a-brac, local craftshop, cellar and wine tasting, casino, thermal baths, thalassotherapy centre, sauna, steam baths, health farm, beauticians, fitness centre, Bio farm

### Surroundings

- **Locality :**

Heated swimming pool 1.25mi.  
Sea/ocean <165'  
Sandy beach 1.25mi.  
Shingle beach 3mi.  
Rocky beach 3mi.  
Nudist beach 6mi.  
Creek 3mi.

Public tennis court 1.25mi.  
18 hole golf course 9mi.  
Windsurfing spots <165'  
Surfing spots 3mi.  
Watersports centre 0.62mi.  
Stretch of water <165'  
Marina 990'  
Slipway 0.3mi.

- **Amenities :**

Village centre 1.25mi.  
Bus stop / bus station 0.3mi.  
Bus pick up point beach 0.3mi.  
Bike/mountain bike hire 1.25mi.  
Car rental 2.5mi.  
Boat rental 3mi.  
Scuba diving material hire 3mi.  
Household linens for hire/laundry services Breadshop 0.3mi.  
Caterer 0.3mi.  
Local shops 0.3mi.  
Supermarket 1.25mi.  
High class retailers 2.5mi.  
Hairdressing salon 0.3mi.  
Post office 1.25mi.  
Bank 0.3mi.  
Cash point 0.3mi.  
Chemist 1.25mi.  
Doctor 1.25mi.  
Nurse 1.25mi.  
Hospital 3mi.



mooring



view from the living room



panorama

## Interior

- **Receive up to :**

from 2 to 10 person(s) (8 adults, 2 children)

- **Liveable floor area :**

1,300 Sq.ft.

- **Interior layout :**

6 Room(s), 4 bedroom(s), 1 bathroom, 1 shower room, 2 WC, living room 700 Sq.ft., sitting room, american style kitchen, dining room, cosy nook, mezzanine

- **Sleeps - bed(s) :**

3 double bed(s), 1 king-size bed(s), 2 single bed(s), 1 baby cot(s), 2 possible extra bed(s)

- **Guest facilities :**

Fireplace, T.V., home cinema, hi-fi system, DVD player, board games, book collection, cable/satellite, internet access, high speed internet access, wifi, wardrobe, cupboard, Hanging wardrobe, safe deposit box, hair dryer, electric heating, wood-burning stove, Glazed in area, Skylights, Curtains, Blinds, Double glazed, digipad entry system, fire alarm, digipad entry gates

- **Appliances :**

Crockery/cutlery, kitchen utensils, electric coffee maker, electric kettle, toaster, juicer, food processor, crepe maker, electric raclette set, fondue set, electric hobs, oven, micro-wave oven, extractor hood, refrigerator, freezer, dish washer, washing machine, vacuum cleaner, iron, ironing board

## Exterior

- **Ground surface :**

0.25 acre.

- **Outside accommodation :**

Terrace 380 Sq.ft., balcony 85 Sq.ft., sundeck 1,600 Sq.ft.

- **Outside setting :**

Enclosed grounds, garden 0.25 acre., landscaped garden

- **Outside amenities :**

Summer living area, BBQ, garden table(s), 10 garden seat(s), arbour, garden seated area, 8 sun recliner(s), outside shower facilities



view from the swimming pool

## Services

- **Washing :**

Sheets supplement (+£14\*), Towels supplement, Blanket(s), Quilt(s), Pillows

- **House :**

Garden/swimming pool maintenance, Parking

## For your guidance

- **For your guidance**

Children welcome

Pets accepted

Mobile telephone network coverage, personal transport advisable

Water : hot/cold

Local voltage supply : 220V / 60Hz

Electricity supply : mains



view from the covered terrace

Floor plan

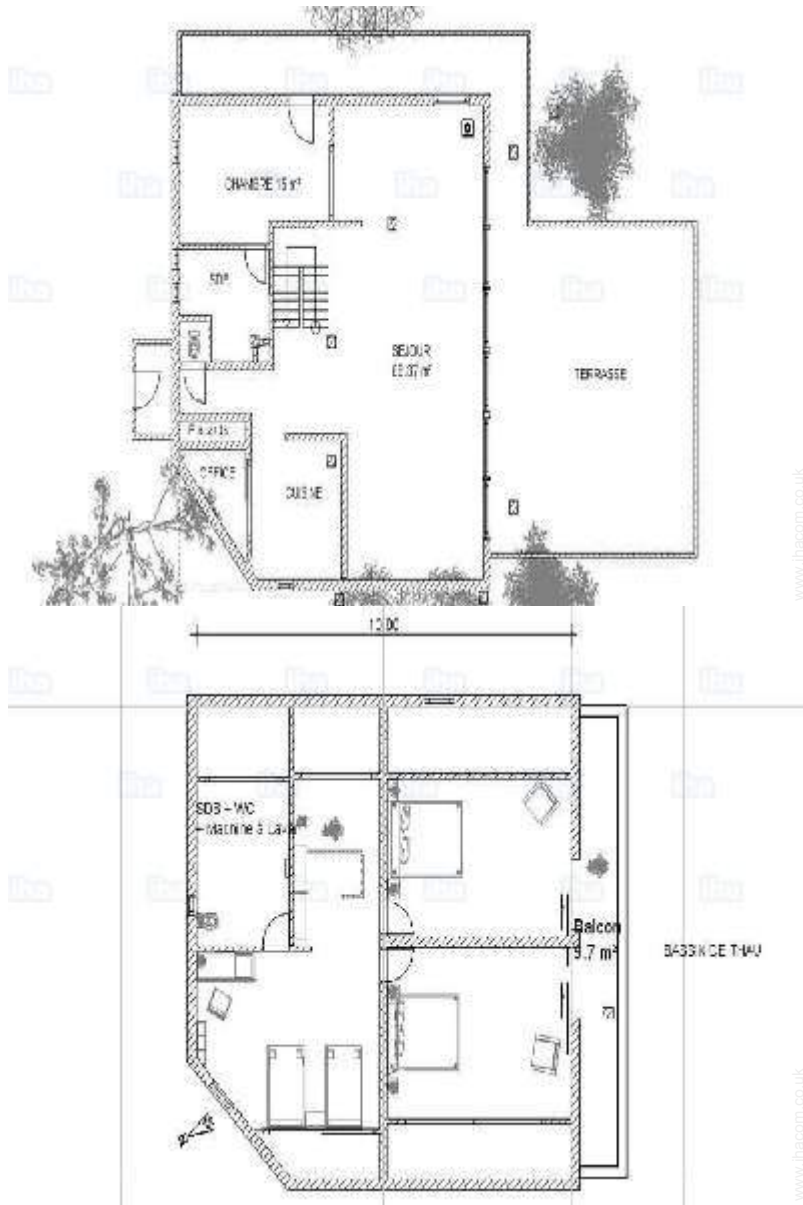


Photo album - 1



view from the living room



mooring



panorama



view from the covered terrace



view from the swimming pool

Charming holiday letting  
Balaruc-les-Bains - Mediterranean Sea  
Charming Wooden House

6

[Book now](#)

Photo album - 2



overall view



the house



sitting room



living room



american style kitchen



master bedroom



Fireplace

Advert No. 17592

[www.ihacom.co.uk](http://www.ihacom.co.uk)



[>> HOLIDAY LETTINGS](#)

[BOOK DIRECT WITH THE OWNERS](#)

Photo album - 3



view from the balcony



mezzanine



bedroom



interior



view of the sunset

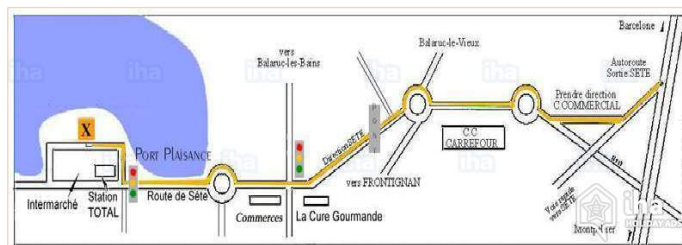


view from the terrace




panoramic view

### Route map



### Location & Access

" Motorway: A9: Series 4km, A 75 exit 20 km. TGV train station - Sète 4km (Paris 3 h 20). Airports: Montpellier-Fréjorgues 20km (Paris 1 h), Béziers-Vias 20 km, Carcassonne 50km, Nîmes 50 km, Marseille 150 km. "

 GPS coordinates in degrees, minutes, seconds: Latitude 43° 26'28"N - Longitude 3°41'46"E ([Dwelling](#))

#### Address

→ Z.A.Maritime  
34540 Balaruc-les-Bains

#### • Airport Montpellier Méditerranée

→ Montpellier, Hérault, Languedoc-Roussillon, France  
→ Distance : 16mi.  
→ Time : 20'

#### • Train station Sète

→ Sète, Hérault, Languedoc-Roussillon, France  
→ Distance : 2.5mi.  
→ Time : 10'

#### • Motorway (junction) A9

→ Sète, Hérault, Languedoc-Roussillon, France  
→ Distance : 2.5mi.  
→ Time : 10'

- Sète : (2.5mi.)
- Montpellier : (18.5mi.)
- Béziers : (24,3mi.)

### Contact

Spoken languages





Location



Charming holiday letting  
 Balaruc-les-Bains - France  
 Charming Wooden House

10  
[Book now](#)

Availability calendar - from : november 2019

Nov	F	Sa	Su	M	Tu	W	Th	F	Sa	Su	M	Tu	W	Th	F	Sa	Su	M	Tu	W	Th	F	Sa							
2019	1	2	3	4	5	6	7	8	9	10	11	12	13	14	15	16	17	18	19	20	21	22	23	24	25	26	27	28	29	30
																			-	-	-	-	-	-	-	-	-	-	-	

Dec	Su	M	Tu	W	Th	F	Sa	Su	M	Tu	W	Th	F	Sa	Su	M	Tu	W	Th	F	Sa	Su	M	Tu							
2019	1	2	3	4	5	6	7	8	9	10	11	12	13	14	15	16	17	18	19	20	21	22	23	24	25	26	27	28	29	30	31
	-	-	-	-	-	-	-	-	-	-	-	-	-	-	-	-	-	-	-	-	-	-	-	-	-	-	-	-	-	-	

Jan	W	Th	F	Sa	Su	M	Tu	W	Th	F	Sa	Su	M	Tu	W	Th	F	Sa	Su	M	Tu	W	Th	F	Sa	Su	M	Tu	W	Th	F
2020	1	2	3	4	5	6	7	8	9	10	11	12	13	14	15	16	17	18	19	20	21	22	23	24	25	26	27	28	29	30	31
	-	-	-	-	-	-	-	-	-	-	-	-	-	-	-	-	-	-	-	-	-	-	-	-	-	-	-	-	-	-	-

Feb	Sa	Su	M	Tu	W	Th	F	Sa	Su	M	Tu	W	Th	F	Sa	Su	M	Tu	W	Th	F	Sa							
2020	1	2	3	4	5	6	7	8	9	10	11	12	13	14	15	16	17	18	19	20	21	22	23	24	25	26	27	28	29
	-	-	-	-	-	-	-	-	-	-	-	-	-	-	-	-	-	-	-	-	-	-	-	-	-	-	-	-	-

Mar	Su	M	Tu	W	Th	F	Sa	Su	M	Tu	W	Th	F	Sa	Su	M	Tu	W	Th	F	Sa	Su	M	Tu							
2020	1	2	3	4	5	6	7	8	9	10	11	12	13	14	15	16	17	18	19	20	21	22	23	24	25	26	27	28	29	30	31
	-	-	-	-	-	-	-	-	-	-	-	-	-	-	-	-	-	-	-	-	-	-	-	-	-	-	-	-	-	-	

Apr	W	Th	F	Sa	Su	M	Tu	W	Th	F	Sa	Su	M	Tu	W	Th	F	Sa	Su	M	Tu	W	Th	F	Sa	Su	M	Tu	W	Th
2020	1	2	3	4	5	6	7	8	9	10	11	12	13	14	15	16	17	18	19	20	21	22	23	24	25	26	27	28	29	30
	-	-	-	-	-	-	-	-	-	-	-	-	-	-	-	-	-	-	-	-	-	-	-	-	-	-	-	-	-	-

May	F	Sa	Su	M	Tu	W	Th	F	Sa	Su	M	Tu	W	Th	F	Sa	Su	M	Tu	W	Th	F	Sa	Su	M	Tu	W	Th	F	Sa	Su
2020	1	2	3	4	5	6	7	8	9	10	11	12	13	14	15	16	17	18	19	20	21	22	23	24	25	26	27	28	29	30	31
	-	-	-	-	-	-	-	-	-	-	-	-	-	-	-	-	-	-	-	-	-	-	-	-	-	-	-	-	-	-	

June	M	Tu	W	Th	F	Sa	Su	M	Tu	W	Th	F	Sa	Su	M	Tu	W	Th	F	Sa	Su	M	Tu							
2020	1	2	3	4	5	6	7	8	9	10	11	12	13	14	15	16	17	18	19	20	21	22	23	24	25	26	27	28	29	30
	-	-	-	-	-	-	-	-	-	-	-	-	-	-	-	-	-	-	-	-	-	-	-	-	-	-	-	-	-	-

Jul	W	Th	F	Sa	Su	M	Tu	W	Th	F	Sa	Su	M	Tu	W	Th	F	Sa	Su	M	Tu	W	Th	F	Sa	Su	M	Tu	W	Th	F
2020	1	2	3	4	5	6	7	8	9	10	11	12	13	14	15	16	17	18	19	20	21	22	23	24	25	26	27	28	29	30	31
	-	-	-	-	-	-	-	-	-	-	-	-	-	-	-	-	-	-	-	-	-	-	-	-	-	-	-	-	-	-	

Aug	Sa	Su	M	Tu	W	Th	F	Sa	Su	M	Tu	W	Th	F	Sa	Su	M	Tu	W	Th	F	Sa	Su	M							
2020	1	2	3	4	5	6	7	8	9	10	11	12	13	14	15	16	17	18	19	20	21	22	23	24	25	26	27	28	29	30	31
	-	-	-	-	-	-	-	-	-	-	-	-	-	-	-	-	-	-	-	-	-	-	-	-	-	-	-	-	-	-	



Charming holiday letting  
Languedoc-Roussillon - Mediterranean Sea  
**Charming Wooden House**

11  
[Book now](#)

Availability calendar - from : august 2020






Sep	Tu	W	Th	F	Sa	Su	M	Tu	W	Th	F	Sa	Su	M	Tu	W	Th	F	Sa	Su	M	Tu	W							
2020	1	2	3	4	5	6	7	8	9	10	11	12	13	14	15	16	17	18	19	20	21	22	23	24	25	26	27	28	29	30
-	-	-	-	-	-	-	-	-	-	-	-	-	-	-	-	-	-	-	-	-	-	-	-	-	-	-	-	-	-	

Oct	Th	F	Sa	Su	M	Tu	W	Th	F	Sa	Su	M	Tu	W	Th	F	Sa	Su	M	Tu	W	Th	F	Sa							
2020	1	2	3	4	5	6	7	8	9	10	11	12	13	14	15	16	17	18	19	20	21	22	23	24	25	26	27	28	29	30	31
-	-	-	-	-	-	-	-	-	-	-	-	-	-	-	-	-	-	-	-	-	-	-	-	-	-	-	-	-	-	-	

Reserved

[Month : Next >>](#)

Rental rates - Charming Wooden House - from 2 to 10 Person(s)

Rates	Night	Weekend	week	2 weeks	Month
 Low season	-	£637* (Friday)	£1092* (Saturday)	£1638*	£2275*
 Mid season	-	£637* (Friday)	£1365* (Saturday)	£2275* (Saturday)	£3640*
 High season	-	-	£2002* (Saturday)	£4004* (Saturday)	£7280* (Saturday)
 Festive specials	-	-	£1456* (Saturday)	£2730* (Saturday)	-
 Promotional period	-	-	£910*	£1365*	£2275*

(Check-in day)

[Book now](#)



panorama



view from the covered terrace



view from the swimming pool



view from the living room



mooring

### Booking conditions

#### • Reservation

- Payment made upon reservation : 30% of rental sum
- Payment balance : 1 month before the stay
- Deposit required : £1365\*

#### • rentals

- Service charges included
- Day tax included
- Cleaning charge levy on departure : £91\*
- Anticipated supplement for :
  - firewood

### Accepted methods of payment

- International Money Order
- Bank transfer (wire)
- Bankers draft
- Travellers Cheques
- Cash
- Holiday voucher

[▶ Book now](#)

[▶ Contact the owner](#)

Contact directly the property owners

[www.ihacom.co.uk](http://www.ihacom.co.uk)

Advert No.

17592

[>> Book now <<](#)

### Contact

Spoken languages



\* Converted at the rate indicated : €100 = \$110 = £91

Advert No. 17592

[www.ihacom.co.uk](http://www.ihacom.co.uk)

